



***sellstrom***<sup>®</sup>

**U.S. WELDING SAFETY SOLUTIONS**

A  
**SureWerx**<sup>™</sup>  
Brand





# AUTO DARKENING HELMETS



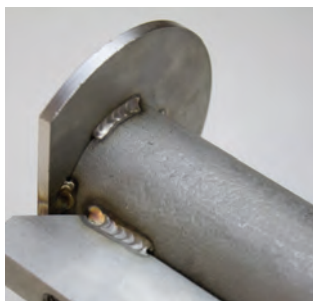
S26400

The Sellstrom brand has been synonymous with innovative welding solutions for almost 100 years. Today we continue to invest in developing products to meet the demands of this extremely challenging environment. Our Advantage, Advantage Plus, and Premium series auto-darkening helmets have all the features necessary for all welders ranging from the general enthusiast to the most seasoned professional. A new breakthrough feature is the Blue Lens Technology which allows more colors of the visible light spectrum to come thru the lens for more natural and accurate tones. This is a must for all professional welders and available on the Premium Series auto-darkening helmet.

Naked Eye

Standard Green Filter

Blue Lens Filter



Blue lens technology  
enhances the true color view

\*\*\*  
**BEST**

**Fully Digital**

Widest viewing area, ideal for  
difficult work angles 3.28" x 3.94"

Designed for use  
with respirators



Three headgear position  
adjustments for better fit

S26400

## PREMIUM AUTO DARKENING HELMETS

### S26400 Premium Series Auto Darkening Helmet

- Blue Lens Technology allows more colors of the visible light spectrum to come thru the lens for natural and more accurate tones
- Includes 4 arc sensors for amazing clarity, enhanced definition, and reduced eye fatigue
- Welding helmet can be used for TIG (>5amp) /MIG and stick application
- Wider viewing area is ideal for difficult work angles
- Full digital operation: shade, sensitivity, delay, and weld/grind control
- Memory function allows the operator to store settings for future use (3 selections)
- Solar and battery operated and includes low battery warning
- Internal controls for maximum protection
- Lightweight design is perfect for extended use
- Ideal for the professional welder and excellent for use in steel fabrication, steel erection, ship building, refinery construction, and much more
- Design allows use of magnifier plate
- Meets and exceeds **ANSI Z87.1** and **CAN/CSA-Z94.3** standards
- **CE Certified**



Prod. No.	Filter Dimension	View Size	Sensors	Light State	Dark State	Power Control	Shade Control	Switching Time	Sensitivity	Delay	Dark to Light	Replacement ADF Filter	Replacement Headgear	Replacement Cover Plates
S26400	5.2" x 4.50"	3.28" x 3.94"	4	4	5-13	Automatic	Internal	0.08ms	Adjustable	Adj.	0.1s-0.9s	S27740	S27006	S19454

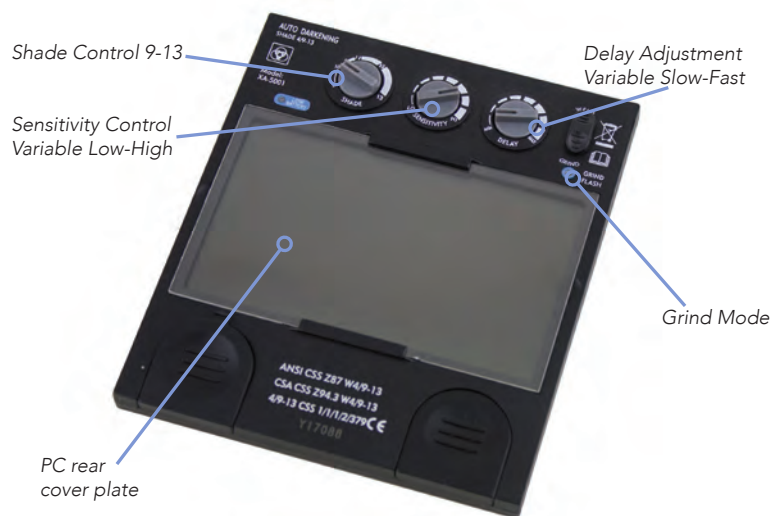


# Auto Darkening Helmet - Advantage Plus



## S26200 Advantage Plus Series Auto Darkening Helmet

- Outstanding protection, performance, comfort, and reliability
- Lightweight design is ideal for extended use
- Easy auto darkening filter and cover plate installation
- Welding helmet can be used for TIG (>5amp) /MIG and stick application
- Internal controls for maximum protection
- Comfortable push and twist ratcheting head gear adjustment
- Comes complete with grind mode/grinding warning
- Designed for serious hobbyists, full-time welders, fabricators, and general automotive applications
- Design allows use of magnifier plate
- Meets and exceeds **ANSI Z87.1** and **CAN/CSA-Z94.3** standards
- **CE Certified**



Prod. No.	Filter Dimension	View Size	Sensors	Light State	Dark State	Power Control	Shade Control	Switching Time	Sensitivity	Delay	Dark to Light	Replacement ADF Filter	Replacement Headgear	Replacement Cover Plates
S26200	5.25"x 4.50"	2.36" x 3.94"	4	4	9-13	Automatic	Internal	0.08ms	Adjustable	Adjustable	0.1s-0.9s	S27720	S27006	S19452

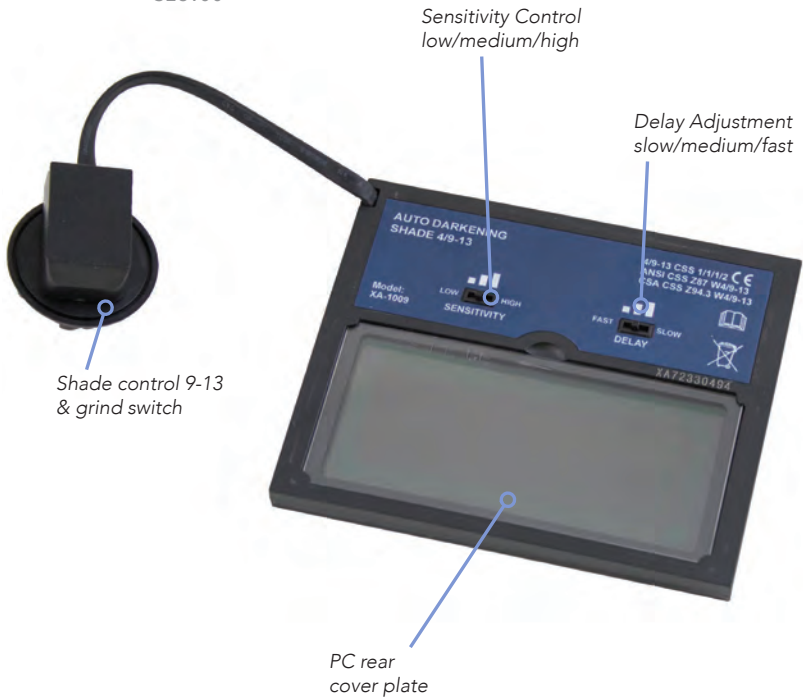
# Auto Darkening Helmet - Advantage



S26100

## S26100 Advantage Series Auto Darkening Helmet

- Adjustable sensitivity and delay controls
- Lightweight design is ideal for extended use
- Welding helmet can be used for TIG (>5amp) /MIG and stick application
- Offers excellent head and neck protection
- Comes complete with grind mode
- Designed for part time users, hobbyists, and general automotive applications
- Design allows use of magnifier plate
- Meets **and exceeds** ANSI Z87.1 and CAN/CSA-Z94.3 standards
- **CE Certified**



Prod. No.	Filter Dimension	View Size	Sensors	Light State	Dark State	Power Control	Shade Control	Switching Time	Sensitivity	Delay	Dark to Light	Replacement ADF Filter	Replacement Headgear	Replacement Cover Plates
S26100	3.54" x 4.33"	1.57" x 3.54"	2	4	9-13	Automatic	External	0.1ms	L/M/H	S/M/H	0.1/0.5/0.9s	S27710	S27005	S19451





# PASSIVE WELDING HELMETS

## 280 SERIES



*Designed for use with cartridge respirators*

### 280 Series Welding Helmets

- Patented Sel-Snap lens retention system provides easy loading of filter, cover, and protective plates
- Specially designed shape for use with cartridge respirators
- Super Tuff nylon provides a durable but lightweight design
- Made with spring loaded positive lock feature on lift front styles
- SUPER KOOL SILVER COATING keeps the helmet 30% cooler than standard helmets and sheds spatter without burning
- Constructed with quick release ratcheting head gear and includes sweat band
- Sold with Shade 10 filter
- Meets and exceeds ANSI Z87.1 and CAN/CSA-Z94.3 standards

## WELDING HELMETS – 280 SERIES

### 280 Series – 2" x 4-1/4" Welding Helmets

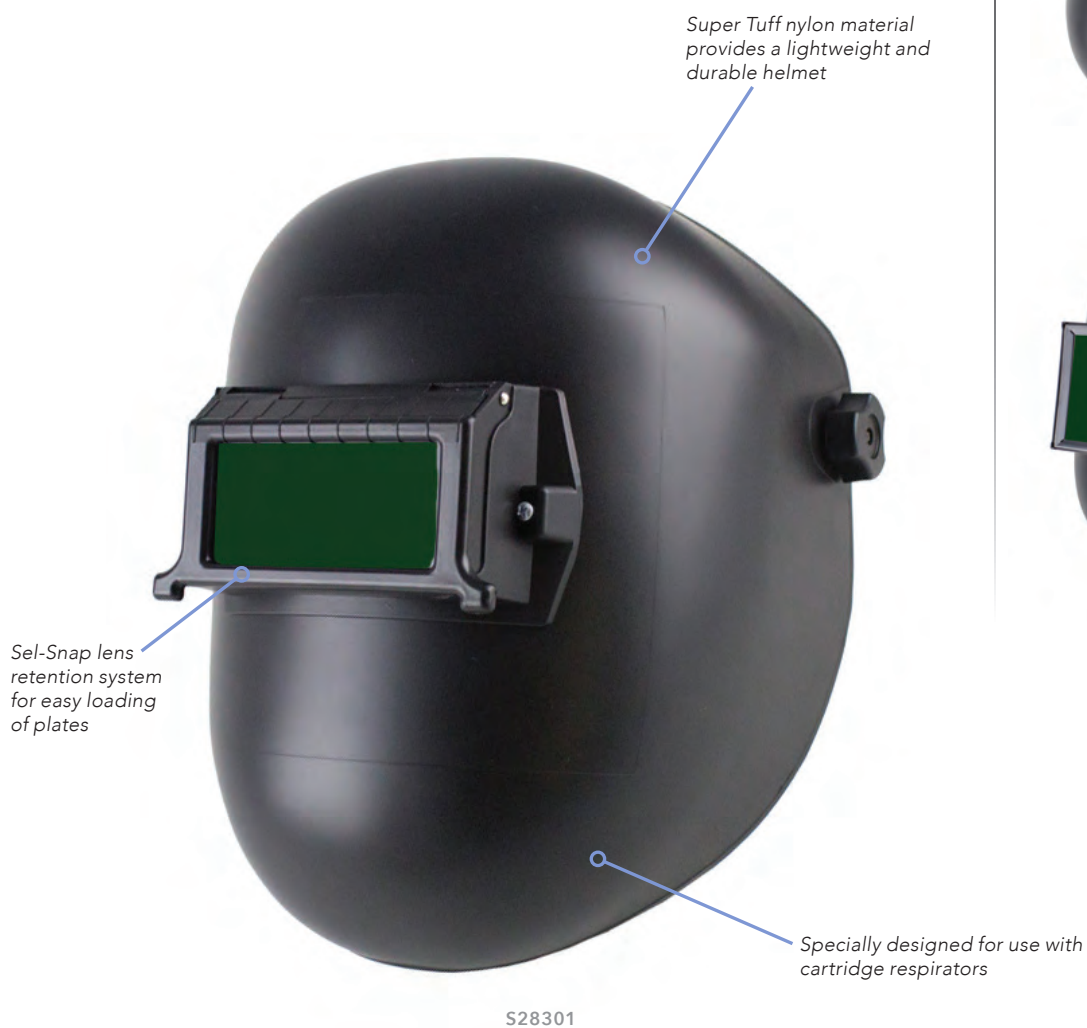
- 2" x 4-1/4" welding helmet
- Includes Shade 10 passive filter

Prod. No.	Color	Bezel Type	Headgear	Helmet Coating
S28301	Black	Lift front	Ratcheting	None
S28501	Black	Fixed front	Ratcheting	None

### 280 Series - 4-1/2" x 5-1/4" Fixed Front Welding Helmet

- 4-1/2" x 5-1/4" welding helmet
- Includes Shade 10 passive filter

Prod. No.	Color	Bezel Type	Headgear	Helmet Coating
S28901	Black	Fixed front	Ratcheting	None



S28301



S28501



S28901





# PASSIVE WELDING HELMETS

## 290 SERIES



S29311

### 290 Series Welding Helmets

- Sel-Snap lens retention system provides easy loading of filter, cover, and protective plates
- Super Tuff nylon provides a durable but lightweight design
- Constructed with quick release ratcheting head gear and includes sweat band
- SUPER KOOL SILVER COATING keeps the helmet 30% cooler than standard helmets and sheds spatter without burning
- Specially designed rigid neck bib provides superior protection from spatter
- Extended crown provides greater overhead protection
- Sold with shade 10 filter
- Meets and exceeds **ANSI Z87.1** and **CAN/CSA-Z94.3** standards



## WELDING HELMETS – 290 SERIES

### 290 Series – 2" x 4-1/4" Welding Helmets

- 2" x 4-1/4" welding helmet
- Includes Shade 10 passive filter

Prod. No.	Color	Bezel Type	Retention System	Helmet Coating
S29301	Black	Lift front	Sel-Snap	None
S29311	Silver	Lift front	Sel-Snap	SUPER KOOL SILVER
S29501	Black	Fixed front	Sel-Snap	None

### 290 Series – 4-1/2" x 5-1/4" Welding Helmets

- 4-1/2" x 5-1/4" welding helmet
- Includes Shade 10 passive filter

Prod. No.	Color	Bezel Type	Retention System	Helmet Coating
S29901	Black	Fixed front	Sel-Snap	None
S29911	Silver	Fixed front	Sel-Snap	SUPER KOOL SILVER



S29301



S29311



S29901

Extended crown provides greater overhead protection



Super Tuff nylon material provides a lightweight and durable helmet

Rigid neck bib provides superior protection from spatter

S29501



# PASSIVE WELDING HELMETS

## TRIDENT SERIES



S41000

### Trident Series Welding Helmets

- Sellstrom's exclusive Trident Series welding helmet offers the user a balanced, lightweight and ergonomic portrait window welding helmet
- Available in standard 2" x 4-1/4" fixed or flip front, as well as 5-1/4" x 4-1/2" fixed front options
- Extended crown provides greater overhead protection
- Specially designed rigid neck bib provides superior protection from spatter
- Lower portion of helmet (chin and neck area) narrows to allow for maximum side-to-side head movement
- Easy auto-darkening and cover plate installation
- Complete with Sellstrom's "quick-release" ratchet headgear suspension with sweatband included (S27001)
- Can also be mounted on slotted hard hats using Sellstrom's dielectric universal slot adaptor (S61970)
- Sold with shade 10 filter
- Meets **ANSI Z87.1** standards



# WELDING HELMETS – TRIDENT SERIES

## Trident Series – 2" x 4-1/4" Welding Helmets

- 2" x 4-1/4" welding helmet
- Includes Shade 10 passive filter

Prod. No.	Color	Bezel Size	ADF Filter
S41000	Black	2" x 4-1/4" fixed front	Shade 10
S41100	Black	2" x 4-1/4" flip front	Shade 10
S41200	Black	5-1/4" x 4-1/2" fixed front	Shade 10

## Trident Series – 4-1/2" x 5-1/4" Welding Helmets

- 4-1/2" x 5-1/4" welding helmet
- Includes Shade 10 passive filter

Prod. No.	Color	Bezel Size	ADF Filter
S41200	Black	5-1/4" x 4-1/2" fixed front	Shade 10



S41100



S41200



S41100



# SPECIALTY WELDING HELMETS

Welding in tight or confined spaces require specific solutions where visibility, comfort, and hood size are critical. The Sellstrom leather helmets, hoods, and bibs are a perfect choice when working in close quarters where additional head, neck, and shoulder protection are required. They are ideal for work in shipyards, submarines, pipe welding, overhead positions, and anywhere else there is little room to move.

## Confined Space Welding Helmet/Hood

- Patented Sel-Snap lens retention system provides easy loading of filter, cover, and protective plates
- Features SUPER KOOL SILVER COATING to keep the helmet 30% cooler than standard helmets
- Built with standard 2"x4-1/4" spring loaded positive lock lift front option
- Comes complete with Quick Release ratchet headgear suspension
- Sold with shade 10 filter
- Meets **ANSI Z87.1** standards



S29411-08E

Prod. No.	Type	Bezel Type	Headgear	Filter
S29411-08E	Confined space	Lift front	Ratcheting	Shade 10



# WELDING HELMETS – SPECIALTY

## Leather Welding Hood

- Ideal for confined space applications where the risk of welding sparks are present in the head, face, neck, and shoulder area.
- Constructed with four stainless steel top ventilation holes with built-in screens for added comfort.
- Complete with ratcheting headgear suspension
- Built with standard 2"x4-1/4" spring loaded positive lock lift front option
- Meets **ANSI Z87.1**

Prod. No.	Type	Bezel Type	Headgear	Filter
S21301-10	Leather Hooded	Lift front	Ratcheting	Shade 10 plate

## Welding Helmet Accessories and Replacement Parts

Prod. No.	Description
S21100	Welders leather bibs with Velcro tabs (fits inside most welding helmets, and a replacement part for Sellstrom S29411-08E)
S22450	450 Sweat-Band all-purpose sweat bands



S21301



S21100

- Arc Flash is a painful condition that can occur if eyes are unprotected and exposed to welding arc rays. To prevent this, make sure to wear a helmet fitted with the proper filter shade, based on your welding application.
- Make sure you don't have any exposed skin while welding, and get fitted with proper personal protective gear.
- Always make sure your work area is clear of flammable materials and debris.
- When leaving your work area, make sure your equipment is turned off and secure.



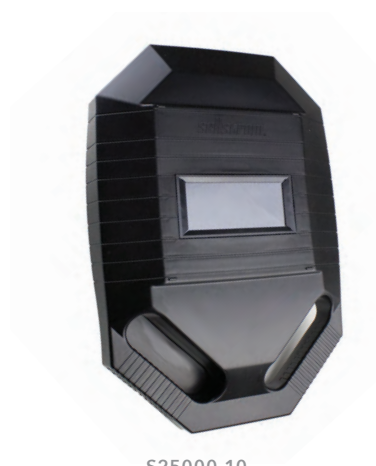


# WELDING HELMETS – SPECIALTY

## Iron Mask Hand Held Welding Shield

- Ideal for temporary viewing of welding applications
- Lightweight and easy to hold in either hand
- Oversized handle slots for use with gloves
- Comes with 2" x 4-1/4" shade 10 filter plate and cover plate
- Meets **ANSI Z87.1** and **CAN/CSA-Z94.3** standards

Prod. No.	Description
S25000-10	Iron Mask hand held welding shield



S25000-10





SELECTING THE BEST SHADE  
FOR THE JOB

According to OSHA, the intensity of visible light and radiant energy produced by operations varies depending on the task, the electrode size, and the arc current. Workers involved in welding, cutting, and brazing operations must use appropriate welding protection depending on specific welding operations.

Only filter lenses with the appropriate shade number will provide protection against optical radiation. Filter lenses must coincide to specific radiant energy exposure. Welding protectors are constructed of heat resistant material such as vulcanized fiber or fiberglass and fitted with a filtered lens to protect worker’s eyes from burns caused by infrared or other intense radiant energy. These devices protect the eyes and face from flying sparks, metal spatter, and slag chips produced during welding, brazing, soldering, and cutting.

Welding helmets are secondary protectors intended to shield the eyes and face from optical radiation, heat, and impact. Use welding helmets in addition to primary protection such as safety spectacles or goggles to provide adequate protection.



ANSI Z49.1 WELDING SHADE SELECTOR CHART

Welding Process	A (Ampère)	0.5	1	2.5	5	10	15	20	30	40	50	60	70	80	90	100	125	150	160	175	200	225	250	275	300	350	400	450	500	550+	
	STICK (SMAW)														10						12						14				
	MIG (GMAW)														11						12					14					
	TIG (GTAW)							10							12									14							
	Plasma welding				6-8						10									12								14			
	Plasma cutting				4					5		6		8					9							12			14		

Shade numbers are given as a guide only and may be varied to suit individual needs.  
As a rule of thumb, start with a shade that is too dark then go to a lighter shade without going below the minimum.

# Welding Helmet Buyer's Guide

## Auto Darkening Helmets



Premium S26400



Advantage Plus S26200



Advantage S26100

<b>Filter Dimension</b>	5.25" x 4.5" (133 mm x 114 mm)	5.25" x 4.5" (133 mm x 114 mm)	3.54" x 4.33" (90 mm x 110 mm)	
<b>Viewing Area</b>	3.28" x 3.94" (83 mm x 100 mm)	2.36" x 3.94" (60 mm x 100 mm)	1.57" x 3.54" (45 mm x 90 mm)	
<b>Modes</b>	Weld/Grind	Weld/Grind	Weld/Grind	
<b>Sensors</b>	4	4	2	
<b>Shade Control</b>	Internal	Internal	External	
<b>Shades</b>	5-9 / 9-13	9-13	9-13	
<b>Low Battery Warning</b>	Yes	Yes	No	
<b>Battery Type</b>	Solar/Battery	Solar/Battery	Solar	
<b>Standards</b>	Meets ANSI, CSA & CE Certified	Meets ANSI, CSA & CE Certified	Meets ANSI, CSA & CE Certified	
<b>Weight</b>	20.6 oz.	20 oz.	17.3 oz.	
<b>Warranty</b>	2 Years	2 Years	2 Years	
<b>Additional Info</b>	Blue lens technology, improved clarity & reduces eye strain. Memory allows operator to store settings for future use	Designed for the more serious hobbyist, welders and fabricators	Designed for hobbyists and general automotive applications, yet come with great features at an affordable price	
<b>Replacement Filters</b>	S27740, S19454	S27720, S19452	S27710, S19451	



## Passive Helmets



280 Series



290 Series



Trident Series



Leather Hooded



Confined Space Hood

	<b>Filter Dimension (by series sku #)</b>	S28301, S28501 2" x 4.25" (50 mm x 108 mm) S28901, S28911 4.5" x 5.25" (114 mm x 133 mm)	S29301, S29311, S29501 2" x 4.25" (50 mm x 108 mm) S29901, S29911 4.5" x 5.25" (114 mm x 133 mm)	S41000: 2" x 4.25" (50 mm x 108 mm) S41100: 2" x 4.25" (50 mm x 108 mm) S41200: 5.25" x 4.25" (133 mm x 108 mm)	S21301-10 2" x 4.25" (50 mm x 108 mm)	S29411-08E 2" x 4.25" (50 mm x 108 mm)
	<b>Viewing Area</b>	S28301, S28501 2" x 4.25" (50 mm x 108 mm) S28901, S28911 5.25" x 4.5" (133 mm x 114 mm)	S29301, S29311, S29501 2" x 4.25" (50 mm x 108 mm) S29901, S29911 4.5" x 5.25" (114 mm x 133 mm)	S41000: 2" x 4.25" (50 mm x 108 mm) S41100: 2" x 4.25" (50 mm x 108 mm) S41200: 5.25" x 4.25" (133 mm x 108 mm)	S21301-10 2" x 4.25" (50 mm x 108 mm)	S21301-10 2" x 4.25" (50 mm x 108 mm)
	<b>Modes</b>	Passive	Passive	Passive	Passive	Passive
	<b>Sensors</b>	N/A	N/A	N/A	N/A	N/A
	<b>Shade Control</b>	N/A	N/A	N/A	N/A	N/A
	<b>Shades</b>	10	10	10	10	10
	<b>Low Battery Warning</b>	N/A	N/A	N/A	N/A	N/A
	<b>Battery Type</b>	N/A	N/A	N/A	N/A	N/A
	<b>Standards</b>	Meets ANSI and CSA	Meets ANSI and CSA	Meets ANSI	Meets ANSI	Meets ANSI
	<b>Weight</b>	18-22 oz.	15-16 oz.	14.2 oz.	26 oz.	26 oz.
	<b>Warranty</b>	1 Year	1 Year	1 Year	1 Year	1 Year
	<b>Additional Info</b>	Contains Sel-Snap lens retention system. Durable yet lightweight design	SUPER KOOL SILVER COATING keeps helmet 30% cooler than standard helmets	Can be used with auto-darkening cover plate. Available in fixed front S41000, S41200 or flip front S41100	Ideal for close welding, protecting the front/sides of your head. Targeted towards ship-hulls/shipyard types of customers	Used for overhead welding applications; provides full protection from sparks & spatter with optimal flexibility
	<b>Replacement Filters</b>	S16610, S16710	S16610	S16610, S16710	S16610	S16610

## WELDING FILTER PLATES – PASSIVE

### Heat Treated Glass Passive Filter Plates

- Offers an economic option compared to other material
- Meets **ANSI Z87.1** basic impact standards

Prod. No.	Plate Size	Shade	Type
S16509	2"H x 4-1/4"W	9 IR	Heat Treated Glass
S16510	2"H x 4-1/4"W	10 IR	Heat Treated Glass
S16511	2"H x 4-1/4"W	11 IR	Heat Treated Glass

S16309	4-1/2"H x 5-1/4"W	9 IR	Heat Treated Glass
S16310	4-1/2"H x 5-1/4"W	10 IR	Heat Treated Glass
S16311	4-1/2"H x 5-1/4"W	11 IR	Heat Treated Glass

### Polycarbonate Passive Filter Plates

- Polycarbonate design offers outstanding impact strength and optical clarity
- Meets **ANSI Z87.1** high impact standards

Prod. No.	Plate Size	Shade	Type
S16609	2"H x 4-1/4"W	9 IR	Polycarbonate
S16610	2"H x 4-1/4"W	10 IR	Polycarbonate
S16611	2"H x 4-1/4"W	11 IR	Polycarbonate
S16709	4-1/2"H x 5-1/4"W	9 IR	Polycarbonate
S16710	4-1/2"H x 5-1/4"W	10 IR	Polycarbonate
S16711	4-1/2"H x 5-1/4"W	11 IR	Polycarbonate

### Gold Coated Polycarbonate Passive Filter Plates

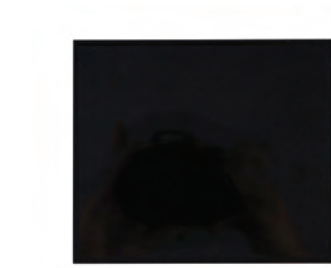
- Polycarbonate design offers outstanding impact strength and clarity
- Gold coating provides added heat and light reflection during intense welding operations
- Meets **ANSI Z87.1** high impact standards

Prod. No.	Plate Size	Shade	Type
S18509	2"H x 4-1/4"W	9 IR	Gold Coated PC
S18510	2"H x 4-1/4"W	10 IR	Gold Coated PC
S18511	2"H x 4-1/4"W	11 IR	Gold Coated PC

S18709	4-1/2"H x 5-1/4"W	9 IR	Gold Coated PC
S18710	4-1/2"H x 5-1/4"W	10 IR	Gold Coated PC
S18711	4-1/2"H x 5-1/4"W	11 IR	Gold Coated PC



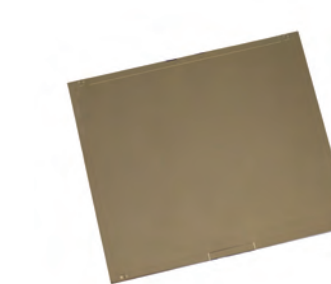
S16609



S16709



S18509



S18709



## COVER PLATES

- Helps protect filter plates from getting pitted and scratched
- Made of durable and heat resistant CR-39 material
- Superior resistance to scratches, heat, and chemicals
- Combines the optics of glass with the added durability of thermostat material
- Meets **ANSI Z81.1** basic impact standards

Prod. No.	Plate Size	Shade	Type
S19002	2"H x 4-1/4"W	Clear	CR-39
S19004	4-1/2"H x 5-1/4"W	Clear	CR-39

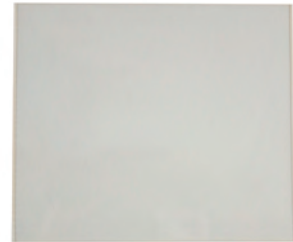
## MAGNIFIER PLATES

- Magnifier plates offer the feature of magnifying your vision, much like reading glasses for improved vision where necessary
- Made of high quality polycarbonate material
- Provide great visual clarity and scratch resistance characteristics

Prod. No.	Plate Size	Shade	Dioptric Ranting
S18150	2"H x 4-1/4"W	Clear	1.50
S18200	2"H x 4-1/4"W	Clear	2.00
S18250	2"H x 4-1/4"W	Clear	2.50



S19002



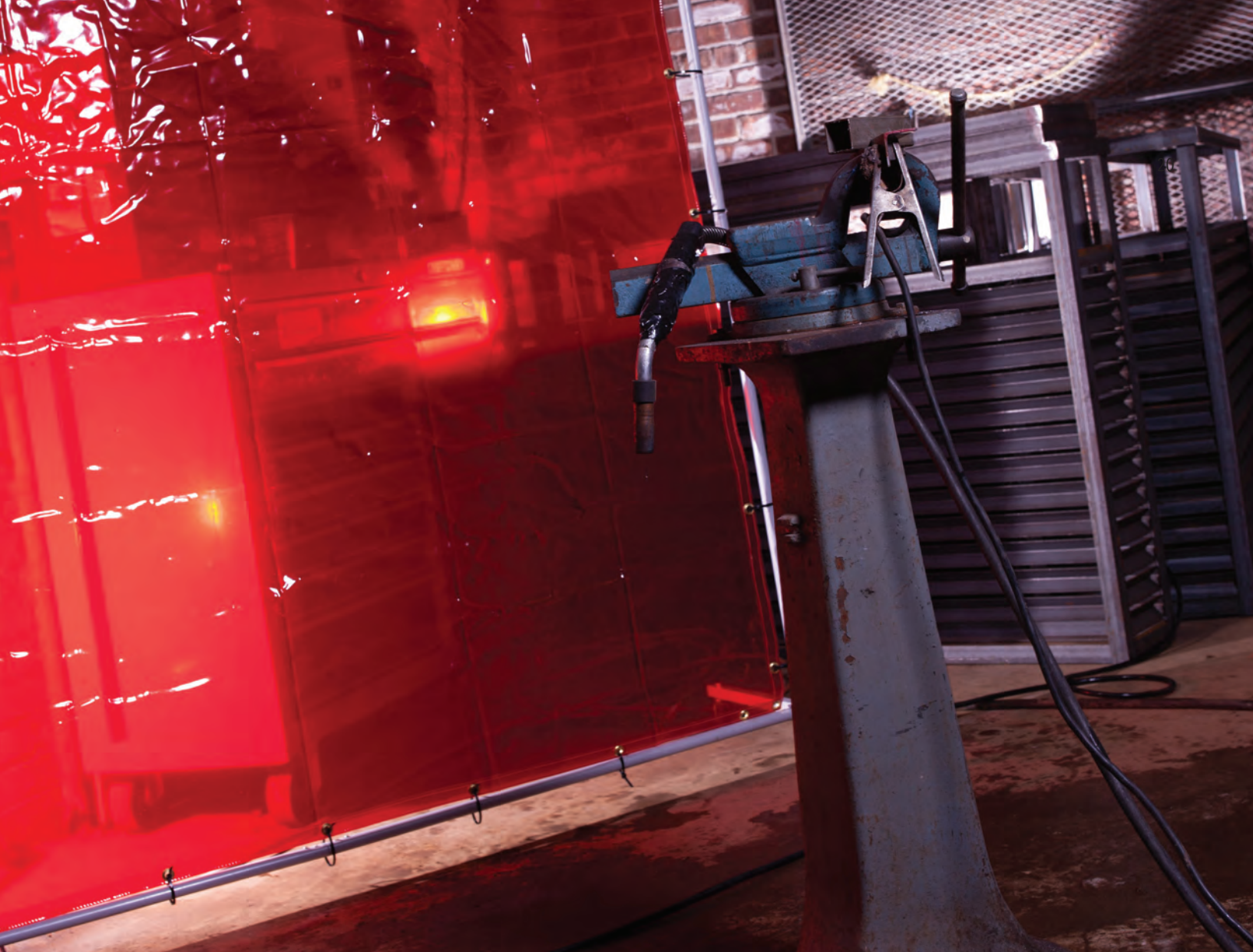
S19004



S18100

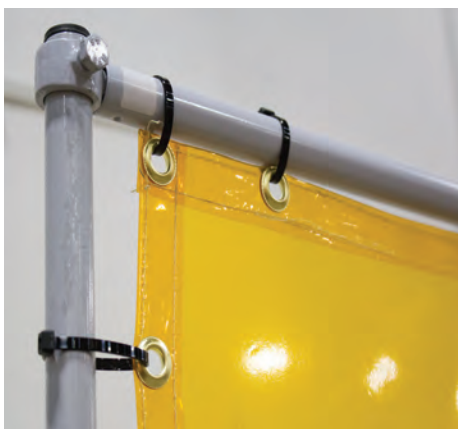
- Safety glasses with side protection are to be used under the helmet during all welding applications. These will protect the worker against flying metal, slag chips, grinding fragments, cutting debris and similar hazards that often ricochet under the users helmet.
- When choosing a welding helmet, make sure it meets the ANSI/CSA standards and that it is the right industrial grade for the weld job.
- Using a welding screen will reduce the amount of dangerous UV light that other workers are exposed to when welding is being performed.





Product shown: S97330 with 7/8 inch round frame

## WELDING CURTAINS & FRAMES



- Creates a customized space designated specifically for welding operations
- Protects bystanders from hazardous infrared and ultra violet radiation
- Helps keep increased temperatures and fumes confined to certain areas
- Made from 14 mil transparent vinyl material
- Available in orange, yellow, and green transparent colors
- Sewn hem for added durability
- Made with grommets for easy hanging
- Frames come with zip ties for easy assembly
- Certified to meet **ANSI/FM 4950**
- Meets **NFPA 701**



## WELDING CURTAINS & FRAMES

### Individual Curtains and Frame Combinations

Prod. No.	Width	Length	Color	Weight	Steel Frame
S97300	6.0'	6.0'	Orange	14 mil	No
S97301	6.0'	8.0'	Orange	14 mil	No
S97306	6.0'	6.0'	Yellow	14 mil	No
S97307	6.0'	8.0'	Yellow	14 mil	No
S97312	6.0'	6.0'	Green	14 mil	No
S97313	6.0'	8.0'	Green	14 mil	No
S97330	6.0'	6.0'	Orange	14 mil	7/8" round tube
S97333	6.0'	8.0'	Orange	14 mil	7/8" round tube
S97336	6.0'	6.0'	Yellow	14 mil	7/8" round tube
S97339	6.0'	8.0'	Yellow	14 mil	7/8" round tube
S97342	6.0'	6.0'	Green	14 mil	7/8" round tube
S97345	6.0'	8.0'	Green	14 mil	7/8" round tube

### Curtain and Frame Combination

- Includes 7/8" round powder coated steel frame
- 6'x 6' with 24" extension
- Frame feet drilled for optional caster assembly
- All curtain and frame combos come with round style
- Includes zip ties for easy assembly

### Replacement Frames

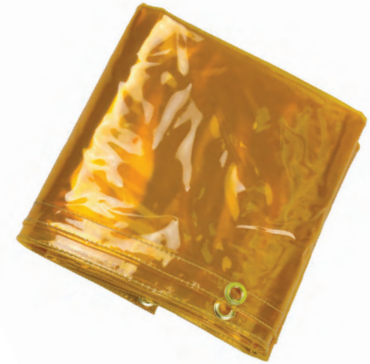
Prod. No.	Width	Length	Extension	Frame Style
S97470	6.0'	6.0'	24"	1" Square Tube
S97471	6.0'	6.0'	24"	7/8" Round Tube

### Accessories

Prod. No.	Description
S97390	Set of 4 casters



S97300



S97306



S97312



S97470



S97471

- Be sure to wear the proper safety equipment and clothing for the job, i.e. eye protection, hearing protection, head protection, gloves, clothing.
- When welding in tight spaces or overhead, wear approved ear-plugs or muffs. They prevent sparks, spatter, and hot metal from entering your ears and causing burns.



# WELDING BLANKETS

## Acrylic Coated Fiberglass

- Acrylic coating provides improved abrasion and tear resistance
- Ideal for medium duty welding applications and is resistant to sparks, spatter, and incidental flame from cutting torches
- Used in industrial plants, refineries, shipyards, and manufacturing facilities
- Heat resistant to 300°F
- Certified to meet **ANSI/FM 4950**



S97608

Prod. No.	Width	Length	Color	Weight	Service Temperature	Rolls
S97608	6.0'	6.0'	Yellow	23 oz	300 °F	
S97609	6.0'	8.0'	Yellow	23 oz	300 °F	
S97620	6.0'	6.0'	Salmon	16 oz	300 °F	
S97621	6.0'	8.0'	Salmon	16 oz	300 °F	
S97661	40"	50 yd	Yellow	23 oz	300 °F	X
S97662	60"	50 yd	Salmon	16 oz	300 °F	X

## Uncoated Fiberglass

- White woven textured fiberglass designed for maximum flexibility using low irritating yarns
- Designed to cover objects that need to be protected from welding sparks and spatter
- Resistant to 1000 °F
- Certified to meet **ANSI/FM 4950**



S97600

Prod. No.	Width	Length	Color	Weight	Service Temperature	Rolls
S97600	6.0'	6.0'	White	18 oz	1,000 °F	
S97601	6.0'	8.0'	White	18 oz	1,000 °F	
S97612	6.0'	6.0'	White	24 oz	1,000 °F	
S97613	6.0'	8.0'	White	24 oz	1,000 °F	
S97660	60"	50 yd	White	18 oz	1,000 °F	X



## Vermiculite Coated Fiberglass

- Economical alternative to silica based welding fabrics
- Special vermiculite coating adds advanced abrasion resistance and helps disperse heat evenly across the surface of the fabric for added heat resistance
- Ideal for applications in the Petroleum and Chemical, Power Generation, Shipbuilding and Marine, Welding and Fire protection, and many other industries
- Certified to meet **ANSI/FM 4950**

Prod. No.	Width	Length	Color	Weight	Service Temperature
S97616	6.0'	6.0'	Black	25 oz	1200 °F
S97617	6.0'	8.0'	Black	25 oz	1200 °F

## Carbon Fiber Felt

- Non-combustible material is ideal for high temperature insulation applications
- Lightweight and soft material sheds less than fiberglass equivalent
- Easy to cut and can be conformed to complex curves
- Provides protections against heavy sparks, spatter, and slag up to 1800°F
- Certified to meet **ANSI/FM 4950**

Prod. No.	Width	Length	Color	Weight	Service Temperature	Rolls
S97624	6.0'	6.0'	Black	16 oz	1800 °F	
S97625	6.0'	8.0'	Black	16 oz	1800 °F	
S97664	72"	50 yd	Black	16 oz	1800 °F	X

## Silica Cloth

Specially designed for applications where both thermal protection and high heat resistance is required

- Provides superior thermal insulation and resists melting up to 3,000 °F
- Comprised of 96% amorphous silica material which is both pliable and durable
- Ideal for use as a heat shield, furnace blanket, extreme welding applications, and other thermal barrier needs
- Certified to meet **ANSI/FM 4950**

Prod. No.	Width	Length	Color	Weight	Service Temperature	Rolls
S97604	6.0'	6.0'	Tan	18 oz	1800 °F	
S97605	6.0'	8.0'	Tan	18 oz	1800 °F	
S97663	36"	50 yd	Tan	18 oz	1800 °F	X



S97616



S97624

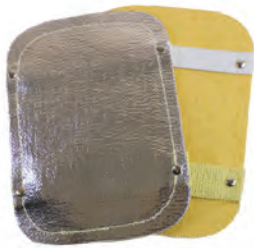


S97604

## CHOOSING THE RIGHT HIGH HEAT MATERIAL

Material Type	18 oz Uncoated Fiberglass	24 oz Uncoated Fiberglass	16 oz Acrylic Coated Fiberglass	23 oz Acrylic Coated Fiberglass	24 oz Vermiculite Coated Fiberglass	18 oz Silica	16 oz Carbon Felt
<b>Application</b>	S97600 S97601 S97660	S97612 S97613 S97661	S97620 S97621 S97662	S97608 S97609 S97661	S97616 S97617	S97604 S97605 S97663	S97624 S97625 S97664
Welding Vertical-general purpose welding with light sparks & spatter	✓	✓	✓	✓	✓	✓	✓
Grinding Flame Cutting	✓	✓	✓	✓	✓	✓	✓
Furnace Blanket						✓	✓
Slag Protection		✓	✓	✓	✓	✓	✓
Heat Treating	✓	✓				✓	✓
Stress relief - Up to 1700 F						✓	✓

**NOTE:** Temperatures and applications are intended as a guideline only and not a guarantee of performance. SureWex recommends the use of welding blankets in multiple layers to attain proper molten metal and radiant heat protection. It is the user's responsibility to monitor the activity and use of blankets/high-heat materials at all times. The user must inspect the blankets before use. Abnormal wear and tear should be removed from service.



S97700



S97455



S32151



S74701



S72905

## WELDING ACCESSORIES

### Double Layer Hand Pad

- Aluminized fiberglass top layer and high temp fabric bottom layer reflects spark and radiant heat to keep hands cooler and more comfortable
- Elastic straps fit over welding glove for a snug and universal fit
- Rugged design is sewn and riveted for extra durability

Prod. No.	Material Type	Size
S97700	• Aluminized fiberglass	5.75" x 8"

## WELDING BLANKET WITH VINYL BAG

### 100% Fiberglass High Temp Fabric

- Intended for use in horizontal applications with light to moderate exposures such as chipping, grinding, heat treating, sand blasting
- Hemmed on all four sides with Kevlar thread for extra durability
- Made with brass grommets on all corners and 36" center
- Strong, safe, and chemical resistant
- Convenient blue vinyl pouch with carrying handle

## FACE SHIELDS – PREMIUM MULTI-PURPOSE

### DP4 Series – c/w Flip-Up IR Window & Ratcheting Headgear

- Molded polycarbonate window curves naturally to fit facial contours
- Exceptional panoramic view with virtually no distortion
- Meets high impact standards and is chemical resistant
- Premium ratcheting headgear suspension
- Meets **ANSI Z87.1-2015, CSA Certified to Z94.3-2015**

Prod. No.	Crown	Suspension	Window	Coatings	Flip Visor
S32151	Black	Ratcheting	Clear	Anti-Fog	Shade 5 IR
S32161	Black	Ratcheting	Clear	Anti-Fog	Shade 6 IR
S32181	Black	Ratcheting	Clear	Anti-Fog	Shade 8 IR

## SAFETY GLASSES - SHADE 3 & 5

Meets **ANSI Z87.1-2015, CSA Z94.3-2015**

### B5 Safety Glasses

- Features fold out contouring side shields for maximum eye protection

Prod. No.	Temple Color	Side Shield	Lens Tint	Lens Coatings
S74701	Black	Black	Shade 5 IR	Hard Coated

### X35 Safety Glasses

- Temple arms molded with side shields for maximum eye protection

Prod. No.	Color	Fixed Lens	Flip Lens Tint	Lens Coatings
S72903	Black	Clear	Shade 3 IR	Hard Coated
S72905	Black	Clear	Shade 5 IR	Hard Coated



## GOGGLES – CUTTING

Meets **ANSI Z87.1-2015**

### Odyssey II Series Shade 5 Cutting Goggle

- Sellstrom carries one of the widest ranges of welding goggles in the industry
- All goggles feature soft, flexible PVC bodies for excellent comfort and fit
- Top & bottom Indirect Vents provide superior ventilation and a safe, fog-free working environment
- Indirect vents provide superior protection against dust and chemical splashes
- **CSA Certified to Z94.3-2015**

Prod. No.	Body Color	Vent Type	Lens	Coatings	Tint
S80210	Black (high temp)	Indirect	Single	Uncoated	Shade 5 IR**

### Plate Goggle

- Features standard size 2" x 4-1/4" Shade 5 IR fixed plate window
- Window includes filter, cover, and impact

Prod. No.	Body Color	Vent Type	Lens	Coatings
S85450	Green	Indirect	Shade 5 IR	Uncoated

### Lift Front Plate Goggle

- Features standard size 2" x 4-1/4" lift front plate window
- Uninterrupted eye protection during cutting and grinding operations
- Clear lens provides eye protection when the flip plate is in the up position
- Flip windows available in two shades: 5 IR and Shade 6 Cobalt Blue
- Window includes filter, cover and impact plates
- **CSA Certified to Z94.3-2015**

Prod. No.	Body Color	Vent Type	Lens	Coatings
S85550	Green	Indirect	Shade 5 IR	Uncoated
S85560B	Green	Indirect	Shade 6 Cobalt Blue	Uncoated

### Lens Cover Goggle

- Features 50mm eye-cup style fixed plate windows with soft PVC body
- **CSA Approved Certified to CSA Z94.3-2015**

Prod. No.	Body Color	Vent Type	Lens	Coatings
S85250	Green	Indirect	Shade 5 IR	Uncoated

### Lift Front Lens Cover Goggle

- Features 50mm eye-cup style lift front eye-cup windows with soft PVC body
- It's easy and safe - by keeping the welding goggle on at all times, the operator can easily flip the shaded windows up or down as required providing uninterrupted eye protection during cutting and grinding operations
- Clear lenses provide eye protection when the flip plate is in the up position

Prod. No.	Body Color	Vent Type	Lens	Coatings
S85350	Green	Indirect	Shade 5 IR	Uncoated

### Eye Cup Goggle

- Our most basic welding type goggle
- Ideal for confined space
- **CSA Certified to Z94.3-2015**

Prod. No.	Body Color	Vent Type	Lens	Coatings
S85150	Green	Non-Vent	Shade 5 IR	Uncoated



S80210



S85450



S85550



S85250



S85350



S85150

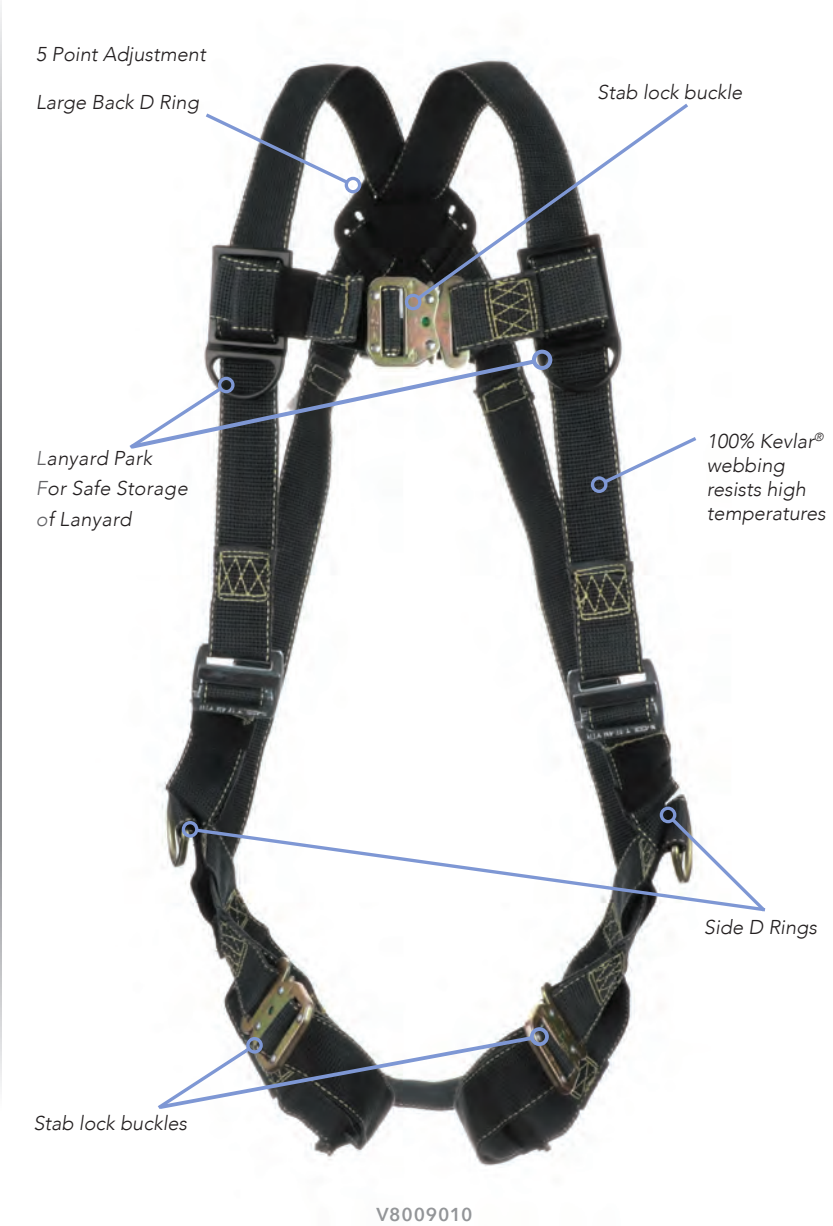
Be Aware When Working At Heights In A High Voltage Electrical Environment.

Falling is not the only Hazard in a High-Voltage Electrical Environment. Other dangers including the possibility of arc flash need to be considered.

An arc flash is an undesired electrical discharge that travels thru the air between conductors or from a conductor to the ground. The resulting explosion can cause fires and serious harm to equipment and people. The temperature of an arc flash may exceed 35,000° F which is capable of vaporizing metal. Arc flash is a leading fatality among electricians which is why OSHA, ASTM, NFPA 70E, and ANSI have established guidelines to help protect workers in these environments.

The American Society for Testing and Materials requires personal fall arrest equipment must pass a drop test after electric arc exposure with heat energy of 40 cal/cm2. The PeakWorks Arc Flash Harness has been third party certified to **ASTM F887-13** where the harness is exposed to a 40 cal/cm2 arc flash and properly performs the fall protection requirements after the exposure. The harness, lanyard, and components must not melt or drip after the exposure while also maintaining the integrity of the fall arrest action.

The PeakWorks Arc Flash harness and Shock Absorbing Lanyards are comprised of 100% Kevlar webbing that allow for superior abrasion resistance. This innovative webbing is tough and specially designed for hot work environments such as welding, brazing, flame cutting, grinding, and any other task that involves sparks. It is ideal for anyone working at heights in a high voltage electrical environment.



Welding and Arc Flash Harness

- Kevlar® webbing resists high temperatures and is designed to withstand harsh welding environments
- 5 points of adjustment (2 leg/2 torso/1 chest) for custom fit
- Upgraded stab lock leg and chest buckles for quick donning
- Large fall arrest D-ring for easy lanyard connection
- Side D-rings for added versatility
- Fall indicator for convenient pre-use inspection
- Certified to **ANSI Z359.11**, **CSA Z259.10**, and **ASTM F887-13** standards

Product No.	Capacity	Material	Weight	D-Rings	Chest Buckles	Leg Buckles	Class	Size
V8009010	130-310 lbs (58.9-140kg)	Kevlar®	4 lbs (1.81kg)	3	Stab Lock	Stab Lock	AP	Universal

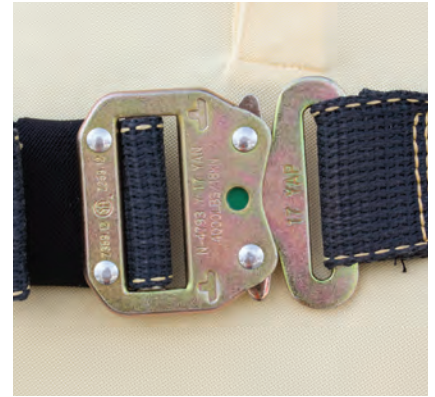




Large Back D-Ring



Adjustable Shoulder Buckle



Stab Lock Buckles for Legs and Chest



V8109506



V8109526

## Welder's Shock Absorbing Lanyards

- Partially Oriented Yarn (POY) material stretches and is encased in tubular webbing for maximum strength
- Special design eliminates the need for a separate shock pack
- Kevlar® webbing protects against welding spatter and resists high temperatures
- Drop indicator for easier inspection before use
- Certified to **ANSI Z359.13**, **ASTM F887-13**, and **OSHA 1910.269/1926.954** standards

Product No.	Material	Length	Deployed Length	Body	Anchor	Average Arrest Force	Weight
V8109526	Kevlar® w/ POY core	6'	10'	Snap	Form	900 lbs	2.5 lbs
V8109506	Kevlar® w/ POY core	6'	10'	Snap	Snap	900 lbs	2.5 lbs

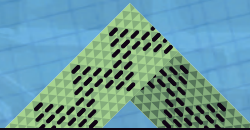




# SureWerx™

Our Family of Safety Brands

*sellstrom*



**PEAKWORKS®**



**KneePro**

1-800-323-7402 | [www.surewerx.com/usa](http://www.surewerx.com/usa) | [www.sellstrom.com](http://www.sellstrom.com)