



PEAKWORKS®

FIXED CABLE & RAIL LADDER SAFETY SYSTEMS

A
SureVerx™
Brand



Do You Know the Standards?

LADDER SAFETY SYSTEM—CABLE

What's Changed for Fixed Ladders Under OSHA 1910 Walking-Working Surface Standard?

Fixed ladders provide stability when ascending to an elevated work surface because they are fastened to the building or a secure surface. In the past, OSHA has required cages for ladders taller than 20 feet, but as of November 19, 2018, fall protection is required on ladders taller than or that extend beyond 24 feet. Several of the important changes are listed below.

- **New height requirement.** Fall protection is required on ladders taller than or that extend beyond 24 feet.
- **New equipment specification.** As of November 19, 2018, cages are no longer considered compliant fall protection in newly-installed ladders. To meet OSHA standards, a personal fall arrest system or a ladder safety system is required.
- **Repair/replacement specifications.** As of November 19, 2018, a personal fall arrest ladder system or ladder safety system will be used to replace any damaged or nonfunctioning section, cage, or well that was previously installed on a fixed ladder.
- **Need more information?** For a more detailed explanation of OSHA 1910, visit www.osha.gov/walking-working-surfaces.

PeakWorks® offers two different ladder safety systems that meet or exceed the new regulations:

Ladder Safety System—Cable

PeakWorks® vertical cable ladder systems are designed for hands-free movement and 100% protection. The system consists of a top and bottom bracket, and a cable that is attached to these brackets at both ends. The cable grab connects the worker to the system and provides a hands-free climb without ever having to manipulate the cable grab. For longer systems, PeakWorks® provides intermediate brackets to minimize the vibration of the system.

Systems come in standard lengths of 50, 100, and 200 feet which are in stock and can be customized for exact requirements.

Features:

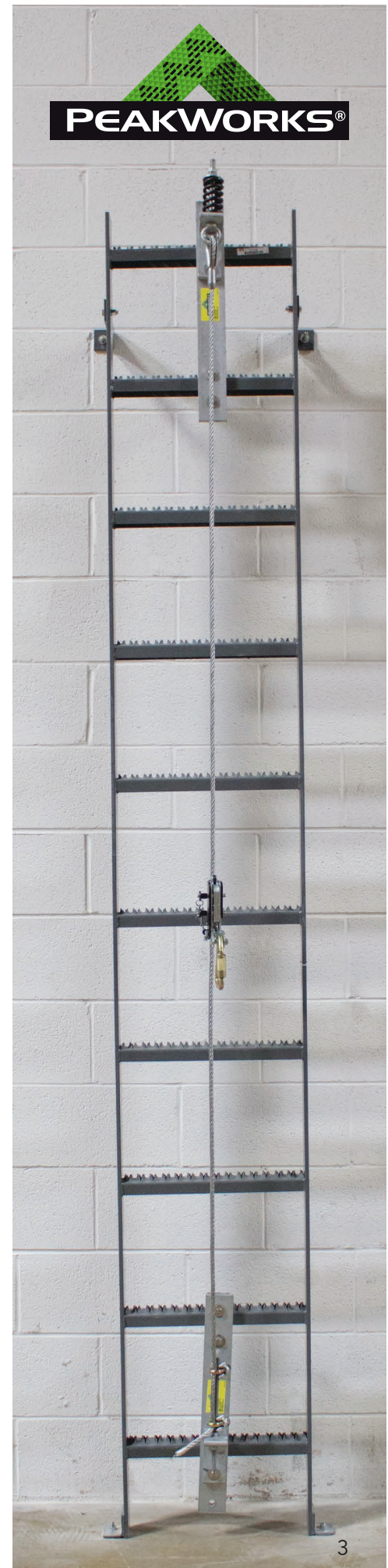
- Fewer parts allow for simple installation and inspection
- Pre-swaged cable termination; 7x19 high-strength galvanized steel cable provides simple and easy installation and low maintenance
- System designed for ladder rung installation only; contact SureWerx for climb extension and removable extension options coming soon
- Designed working load is 310 lbs.
- Standards Compliance: **ANSI A10.14, OSHA 1910.66, 1926.500**

ORDERING NO.	CABLE LENGTH	Guides Included
V865423	50' Cable Ladder Safety System	1
V865428	100' Cable Ladder Safety System	3
V865438	200' Cable Ladder Safety System	6

Above kits include all hardware below:

Upper and lower brackets; specified aircraft cable length; 7x19 galvanized aircraft cable, 3/8"; cable guide for every 25' spacing; and Peakworks CableGrab™ Safety Sleeve

Give us a call to help you design your Climb-Rite® Fixed Rail Ladder System





LADDER SAFETY SYSTEM—CABLE

CableGrab™

The 2001 CableGrab™ is a detachable sliding device which moves freely up or down hands free on the 3/8" galvanized steel cable. When the upward force is removed, the CableGrab™ device automatically locks at any point on the cable. The instantaneous locking is achieved through an effective cam-locking system. The system includes a double-locking carabiner which is to be used when securing the CableGrab™ device to the climber's full-body harness.

- The CableGrab™ glides freely up or down the cable as the worker climbs
- Dual independent cams designed to immediately lock on to the cable and arrest the fall. The CableGrab™ will remain locked until the worker can step back onto the ladder or be rescued
- Easy to install and detach anywhere along the cable
- Intended to be used on 3/8"-diameter solid core cable system
- Intended to be used with a 2" self-locking carabiner and attached to a front D-ring full-body harness.
- Maximum length of the connector to the wire grab from the harness should not exceed 9'.
- 2.75 lbs lightweight construction.



Cable Grab



Top

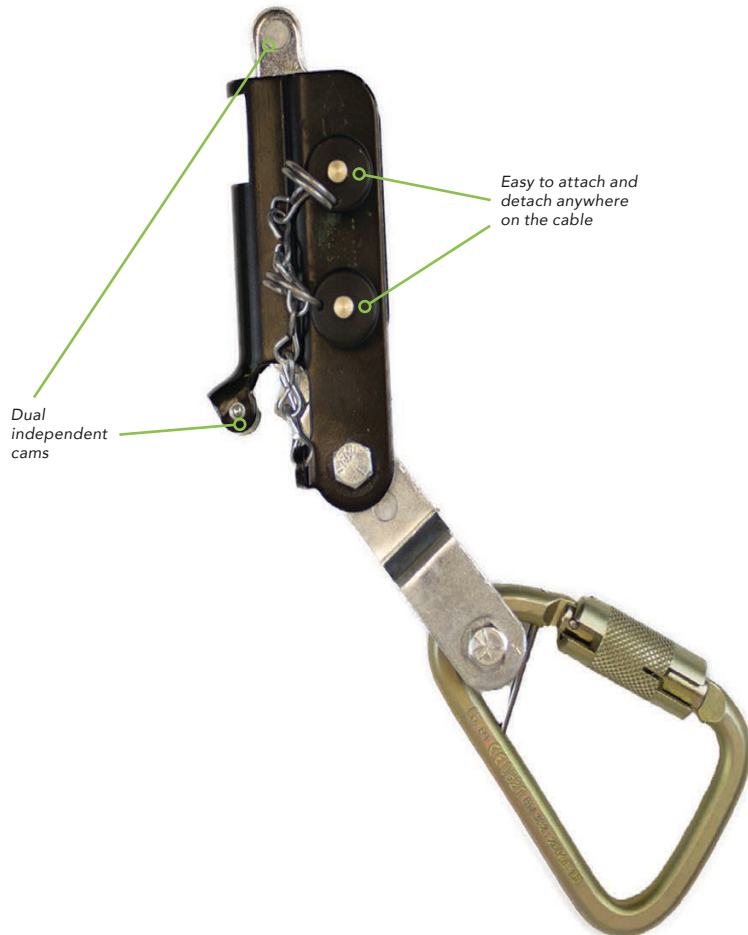


Bottom



Cable Guide

PRODUCT NO.	DESIGNED WORKING LOAD	Dimensions
V865192	310 lbs.	5" x 8" x 2.5"



LADDER SAFETY SYSTEM—RAIL

2000 Series Climb-Rite® Fixed Rail Ladder Safety System

The Climb-Rite® fixed rigid rail ladder system offers workers 100% fall protection when climbing permanent ladders. Each are custom designed by our in-house engineering staff to provide the right solution for your needs. The system works by bringing four hardened steel brakes into contact with the rail as soon as a fall is detected. Using a detachable sliding sleeve that rolls freely up and down the rail, the Climb-Rite® system can be used both above and below ground, and on interior or exterior surfaces.

100% Fall Protection for Fixed Ladders

The complete climbing system includes the Climb-Rite® device, 10' rail sections, rail splices, rail stops, parking pins, and rung clamps. The system has been designed without rail notches or serrations that can corrode or rust. Rail extensions and unique SkySwivel™ rotation device are available for safe ladder access and egress.

Features:

- System glides effortlessly, allowing hands-free movement up and down the ladder
- Easy to install, remove, and maintain
- Climbing device weighs only 2 lbs.
- All ladder hardware is corrosion-resistant stainless steel
- Type 316 stainless steel rail is available for marine or other corrosive environments
- Can be mounted to side or center of ladder
- Ladder extensions available
- Accommodates multiple workers
- Easy to order complete kits and simple installation kits
- **Meets OSHA and ANSI standards**

PART NO. FOR STAINLESS STEEL	SYSTEM LENGTH	Section of 10 ft. Rails	Number of Ladder Rung Clamps Included
V865191	10'	1	3
V865193	20'	2	5
V865195	30'	3	8
V865196	40'	4	10
V865197	50'	5	12
V865198	60'	6	14
V865199	70'	7	16

Kits include 1" diameter round rung clamps. Contact SureWerx for additional shapes and sizes.



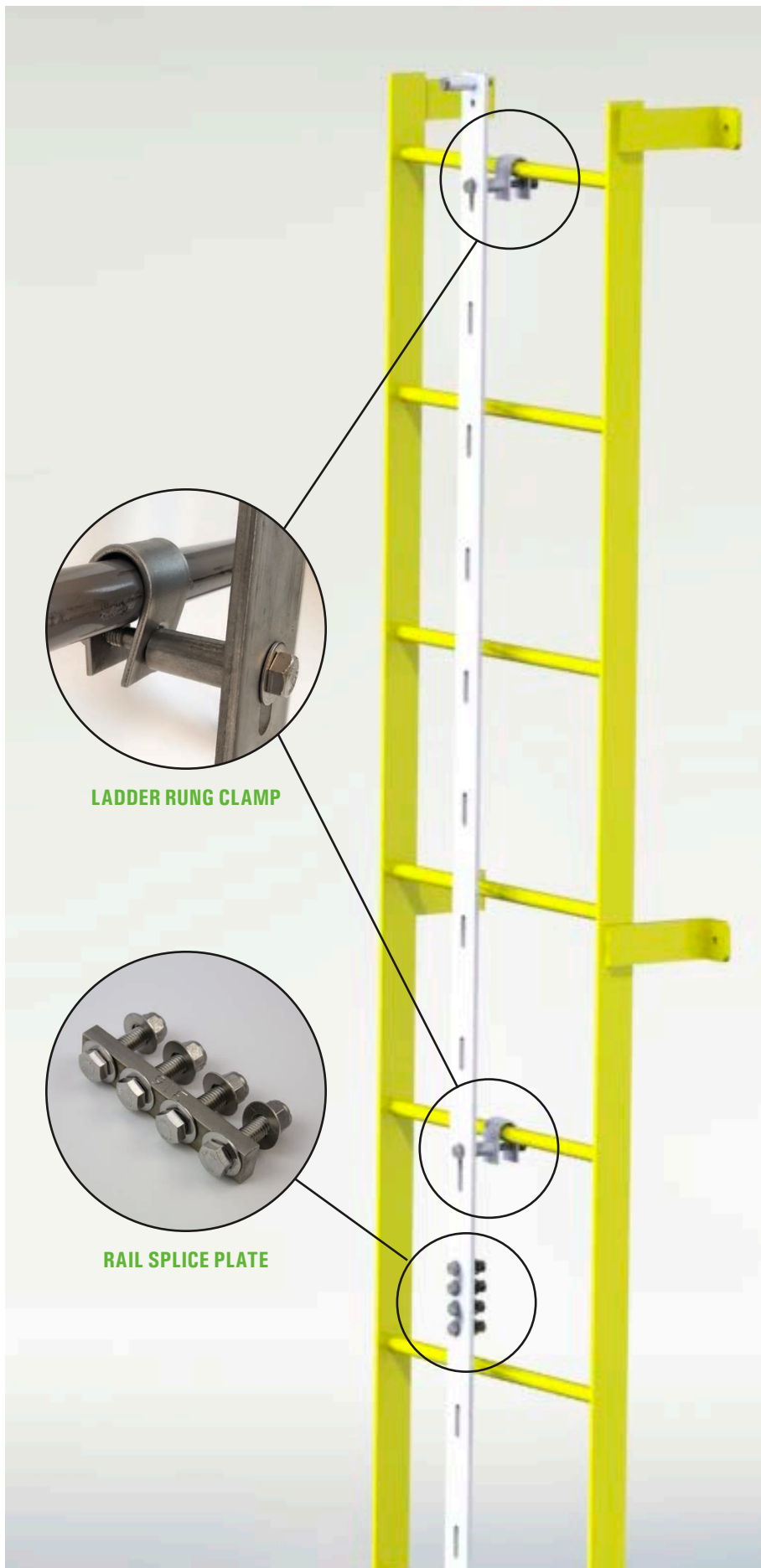
*Fixed ladders over 24 ft.
installed after November
2018 must have an active
fall protection system.*

—OSHA



PEAKWORKS®





LADDER RUNG CLAMP

RAIL SPLICE PLATE

Ladder Anchorage Strength

The ladder or anchorage structure must be capable of supporting a minimum of 3,600 lb. when certification exists, or 5,000 lb. in the absence of certification. (See ANSI Z359.1 for definition of certification.) When more than one personal fall arrest system is attached to an anchorage, the anchorage strengths above shall be multiplied by the number of personal fall arrest systems attached to the anchorage.

This requirement is consistent with OSHA requirements as follows: Anchorages used for attachment of personal fall arrest systems shall be independent of any anchorage being used to support or suspend platforms and capable of supporting at least 5,000 lb. per user attached, or be designed, installed and used as part of a complete PFAS which maintains a safety factor of at least two and is supervised by a qualified person.

The Climb-Rite® system may be climbed simultaneously by several persons each using their own Climb-Rite® device. Workers must maintain at least 6 ft. of spacing between each other.



Stainless steel rail



2000 Clim-Rite® Trolley



V8651203

LADDER SAFETY SYSTEM—RAIL

Rail

- Used for the Clim-Rite® ladder climbing system and the RailWalker® system
- Complies to OSHA 1910.27(d) & 1926.1053 for Ladder Safety Devices
- Complies to ANSI A14.3 (1992) Fixed Ladder Safety Standard
- Connects to ladder with rung clamps
- Connections are spaced every 6" on stainless steel rails
- Join sections of rail using rail splice 9200-SSPL

PART NO.	Dimensions	Material	Weight
V8651164	10' x 2" x 1/4"	316 stainless steel	18 lbs.
V8651162	10' x 2" x 1/4"	304 stainless steel	18 lbs.
V8651126	10' x 2"	T6 aluminum	12 lbs.

2000 Clim-Rite® Trolley

- Detachable sliding safety device that attaches to a vertical fixed rail for fall arrest protection
- Complies to OSHA 1910.27(d) & 1926.1053 for Ladder Safety Devices
- Complies to ANSI A14.3 (1992) Fixed Ladder Safety Standard
- Weighs 3.25 lbs.
- Made of CNC-machined aluminum with stainless steel pins, Zytel™ roller bearings, stainless steel spring, and stainless steel bolts
- Fits a 1/2" x 2" stainless steel rail or T-shaped aluminum 1/4" x 2" rail
- Swivel snap hook is permanently attached to the D-ring on the Clim-Rite® device

PART NO.	Designed Working Load	Dimensions
V865190	310 lbs.	4" x 3 1/2" x 3"

Rail Splice Plate

- Rail splice plate for the Clim-Rite® ladder climbing system
- Complies to OSHA 1910.27 & 1926.1053
- Complies to ANSI A10.14
- Weighs 1.56 lbs.
- Made of 304 series stainless steel
- Includes stainless steel hardware

PART NO.	Material
V8651203	304 stainless steel

LADDER SAFETY SYSTEM—RAIL

Permanent Ladder Extension

- Stainless fixed ladder extension for the Climb-Rite® Ladder climbing system
- Complies to OSHA 1910.27 & 1926.1053 for Ladder Safety Devices
- Complies to ANSI A14.3 (1992) Fixed Ladder Safety Standard
- Weighs approximately 10 lbs.
- Made of 316 series stainless steel or 304 series stainless steel
- Connects to ladder with 2 rung clamps

PART NO.	Dimensions	Material
V8651153	66" long	304 stainless steel
V8651154	66" long	316 stainless steel

Removable Ladder Extension Kit

- Allows the Climb-Rite® System to extend above the ladder
- Includes top and bottom portion of removable ladder for the Climb-Rite® ladder climbing system
- Complies to OSHA 1910.27 & 1926.1053 for Ladder Safety Devices
- Complies to ANSI A14.3 (1992) Fixed Ladder Safety Standard
- Weighs approximately 20 lbs.

PART NO.	Dimensions	Material
V8651161	2" wide x 66" long	316 stainless steel
V8651160	2" wide x 66" long	304 stainless steel

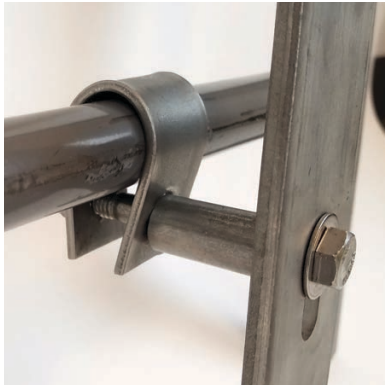


Removable Ladder Extension—Top



Bottom





Round



Square



Diamond

LADDER SAFETY SYSTEM—RAIL

Ladder Rung Clamp

- Attachment hardware to connect PeakWorks ladder safety systems to ladder rungs
- Complies to OSHA 1910.27 & 1926.1053 for Ladder Safety Devices
- Complies to ANSI A14.3 (1992) Fixed Ladder Safety Standard
- Weighs .4 to .68 lbs.
- Made of 316 series stainless steel
- Rung clamps also available for other shapes and sizes; contact SureWerx

Round

PART NO.	NSN NO.	Rung Clamp Size
V8651173	9200-SRC0625R	5/8" Round
V8651175	9200-SRC0750R	3/4" Round
V8651182	9200-SRC0875R	7/8" Round
V8651185	9200-SRC1000R	1" Round

Square

PART NO.	NSN NO.	Rung Clamp Size
V8651176	9200-SRC0750S	3/4" Square
V8651187	9200-SRC1000S	1" Square
V8651189	9200-SRC1250S	1.25" Square

Diamond

PART NO.	NSN NO.	Rung Clamp Size
V8651184	9200-SRC1000D	1" Diamond

PeakWorks recommends sending the Climb-Rite® device to a PeakWorks repair facility every two years. Contact us at 800.323.7402 for more information.

LADDER SAFETY SYSTEM—HARNESS

PeakPro Harness (sold separately)

- Premium full body harness with lightweight breathable back support and leg straps
- Stab-lock buckles located at the chest and legs make it easy for donning
- A fall indicator makes it easy for inspections
- PeakPro harness comes equipped with an RFID chip which allows the harness owner to keep track of the inspection history.
- Material: polyester webbing and zinc-plated steel hardware

PART NO.	MODEL NO.	Series	Size	Weight Capacity	Class	Harness Weight
V8006120	FBH-60110L	PeakPro	Universal	310 lbs.	Class AL	4 lbs.

BUCKLE TYPE				D-RING LOCATION		
Chest	Legs	Shoulders	Back	Sides	Front	Shoulders
Stab Lock	Stab Lock	Friction			X	

Contractor Harness Series (sold separately)

- Lightweight full body harness with durability, comfort and high visibility colors
- Points of adjustment for maximum comfort (2 shoulder, 2 leg, 1 chest).
- Quick-connect buckles located at the legs make it easy for donning
- A fall indicator makes it easy for before-use inspections.
- Material: polyester webbing and zinc-plated steel hardware

PART NO.	MODEL NO.	Series	Size	Weight Capacity	Class	Harness Weight
V8002020	FBH-10000L	Contractor	Universal	310 lbs.	Class AL	2.5 lbs.

BUCKLE TYPE				D-RING LOCATION		
Chest	Legs	Shoulders	Back	Sides	Front	Shoulders
Stab Lock	Quick Connect	Friction			X	



V8006120

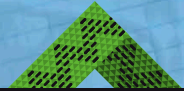


V8002020



SureWerx™

Our Family of Safety Brands



PEAKWORKS®

***sellstrom*®**

JACKSON®
SAFETY Brand



WILSON®



ADA SOLUTIONS

KneePro

Toll free 800.323.7402
info@fallprotection.com
surewerx.com/usa • fallprotection.com